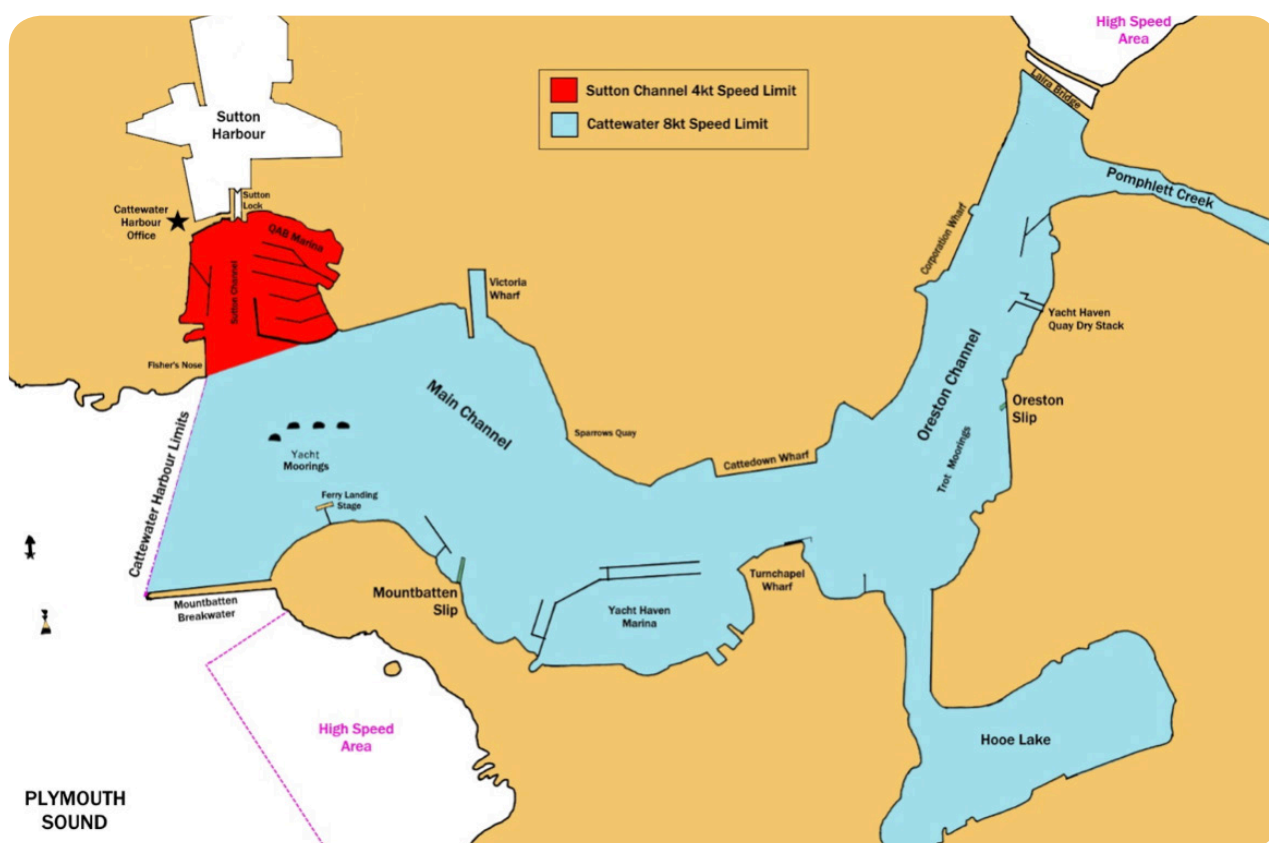




CATTEWATER  
HARBOUR

## CODE OF CONDUCT | FOR ALL VESSELS AND CRAFT USING THE CATTEWATER



## GENERAL

1. The following Codes of Conduct for Cattewater Water Users are in amplification of the Dockyard Port of Plymouth Order 2019 and the International Regulations for the Prevention of Collision at Sea.
2. The code is published after consultation between the harbour users' representatives, the Plymouth City Council Harbour Master and the Cattewater Harbour Master.

## DEFINITIONS

3. **Main Channel** is an area 200 feet either side of the lines indicated by the channel beacons on QAB Breakwater, above Sparrow's Quay and on Turnchapel Heights; as marked on current Admiralty Charts.
- Sutton Channel** is the area north of Fisher's Nose leading to the entrance to Sutton Harbour, bounded to the east by Queen Anne's Battery Marina.
- Oreston Channel** is the marked channel between the trot moorings at Oreston and the Cocklebank.

# CODE OF CONDUCT

## 4. SPEED LIMITS

- a. No vessel will proceed at a speed exceeding **4** knots in Sutton Channel, or **8** knots elsewhere in the Cattewater.
- b. All craft must keep their wash to a minimum, especially when passing loading berths, marinas, slipways or moorings.
- c. For speed limits outside the Cattewater, see the current Dockyard Port of Plymouth Order.

## 5. PERSONAL WATERCRAFT INCLUDING JETSKI'S, AND OTHER HIGH SPEED CRAFT

- a. Will not exceed the speed limits described in paragraph 4 of this code.
- b. Will not take part in water skiing, towing, parascending or any similar activities in the Cattewater.
- c. Personal Watercraft/Water Ski craft may be launched into the Cattewater and driven at slow speed (keeping wash to a minimum) to the designated High Speed Areas shown on current Admiralty Charts.

## 6. COMMUNICATION

When possible, all craft fitted with VHF radio should maintain a listening watch on VHF Channel 14.

## 7. ALL CRAFT MUST:

- a. Keep to the starboard side of the channel.
- b. Pass Fishers Nose with a wide berth, keeping a sharp lookout for fishing lines.
- c. Keep a good lookout.
- d. Clear the channels as required by the Harbour Master, Pilots or Merchant Vessels making the appropriate sound signals.
- e. Keep clear of any mooring areas unless picking up a mooring, or unless the constraints of navigation require them to enter such areas.

## 8. PASSENGER VESSELS AND FERRIES:

- a. Will secure in loading and waiting with a minimum of two berthing ropes.
- b. Will not use engines when made fast alongside unless required for the safety of the vessel, its crew or its passengers.
- c. Will not move off the berth unless certain their intended route is clear.
- d. Will make appropriate sound signals when manoeuvring as required by IRPCS.
- e. Will not pass through any moorings.
- f. Will normally berth at the Barbican Landing Stage under the direction of the Plymouth City Council Harbour Master.

## 9. BARBICAN LANDING STAGE

Only craft licensed by Plymouth City Council or Cattewater Harbour Commissioners are permitted to use this Facility. Use by private craft is not permitted.

## 10. MOUNT BATTEN PASSENGER LANDING STAGE

All craft passing this area are to keep well clear and reduce their wash.

## 11. TRANSITING THE CATTEWATER

All craft should wherever possible navigate through the Cattewater using the main channel, as marked on current Admiralty Charts, keeping where possible to the starboard side.

## 12. SAILING CRAFT - GENERAL

- a. Will give way to any vessel exceeding 20m in length navigating in any waters within the Cattewater.
- b. Will, where applicable, proceed under engine when operating north of a line joining Fisher's Nose and the southern tip of QAB Breakwater.

## 13. SAILING CRAFT - RACING

- a. Racing marks will not be laid in the Main, Sutton or Oreston Channels without prior permission from the Harbour Master or their representative.
- b. Will not race through any trot moorings.
- c. Will not race, linger or free sail in Sutton Channel.

#### **14. WINDSURFING**

Windsurfing is prohibited east of a line joining Yacht Haven Hoist and Victoria Wharf.

#### **15. CRAFT USING QUEEN ANNE'S BATTERY MARINA**

- a. Craft leaving the marina will give way to traffic navigating through Sutton Channel.
- b. Craft entering the marina will give way to craft leaving.

#### **16. DIVING OPERATIONS**

Diving operations must only be carried out with the written permission of the Cattewater Harbour Master by means of a Diving Permit available online.

#### **17. VESSELS USING THE MOUNTBATTEN CENTRE PONTOON**

Commercial vessels using the Mountbatten Centre pontoon should approach and depart via the main channel, only navigating through the mooring area to/from the vicinity of number 3 starboard hand buoy.

#### **18. CANOES, KAYAKS AND PADDLEBOARDS**

- a. Will clear the launching slipway immediately after launching.
- b. Will rendezvous and brief at a point clear of slipways.
- c. Will cross all channels at right angles.

